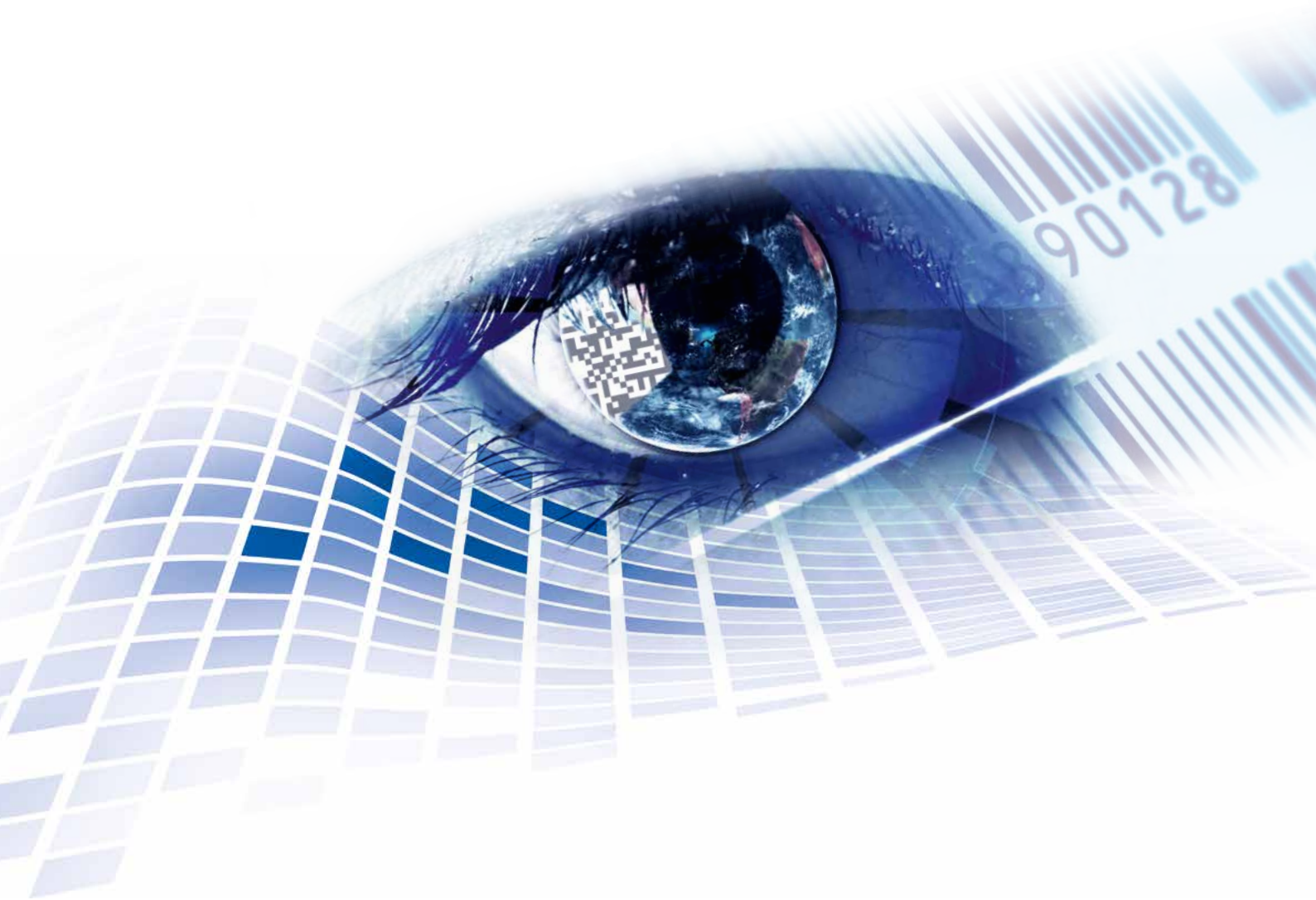


## LABEL PRINTERS

Packaging printing in perfection.



# LABELING VISIONS

everything . is . possible



## Contents

---

Micra	Appealing design and compact overall size.	Page 4 . 5
Pica II	High reliability in second generation.	Page 6 . 7
Vita II	More flexibility. More efficiency. More reliability.	Page 8 . 9
Compa III	High versatility in a new look.	Page 10 . 11
Vario III	Bestselling printer already in its third generation.	Page 12 . 13
Spectra II	Highspeed performance in second generation.	Page 14 . 15

# Micra

## Appealing design and compact overall size.



### Highlights

- > Cost-effective entry-level printers for small print volumes
- > Thermal direct or thermal transfer print
- > Print width up to 106.6 mm
- > Serial, parallel and USB port

### Options

- > Ethernet/LAN interface
- > Rotation cutter unit
- > Dispenser unit
- > External label unwinder

### Rotation cutter unit



### Dispenser unit



### External label unwinder



	<b>Micra 104/8</b>	<b>Micra 106/12</b>
<b>Printing</b>		
Print resolution	203 dpi	300 dpi
Print speed	50 ... 100 mm/s	50 ... 100 mm/s
Print width	max 104 mm	max 106 mm
Passage width	max 118 mm	max 118 mm
Printhead	Flat Type	Flat Type
<b>Labels</b>		
Adhesive labels, continuous labels	rolls: paper, cardboard, textile, synthetics	
Material weight	max 220 g/m <sup>2</sup> (larger on demand)	
Label width	min 25 mm	
Label height	min 12 mm	
Label height Standard Ethernet (option)	max 850 mm max 800 mm	max 600 mm max 550 mm
Roll diameter	max 127 mm	
Core diameter	25.4 mm / 38.1 mm / 76.2 mm	
Winding	outside or inside	
Label sensor	below transmission and reflexion	
<b>Transfer Ribbons</b>		
Ink	outside	
Core diameter	25.4 mm / 1"	
Roll diameter	max Ø 68 mm	
Length	max 300 m	
Width	max 110 mm	
<b>Fonts</b>		
Font types	6 bitmap fonts   6 proportional fonts   more fonts on demand	
<b>Bar Codes</b>		
1D bar codes	CODABAR, Code 128, Code 2/5 interleaved, Code 39, Code 39 extended, Code 93, EAN 13, EAN 8, EAN ADD ON, GS1-128, Identcode, ITF 14, Leitcode, Pharmacode, PZN 7 Code, UPC-A, UPC-E	
2D bar codes	Aztec Code, CODABLOCK F, DataMatrix, MAXICODE, PDF 417, QR Code	
<b>Dimensions</b>		
width x height x depth	226 x 171 x 285 mm	
<b>Weight</b>		
Weight	3 kg	
<b>Interfaces</b>		
Serial	RS-232C (max 57,600 baud)	
Parallel	Centronics	
USB	1.1	
Ethernet (option)	10/100 Base T	
<b>Operating Conditions</b>		
Nominal voltage	110 ... 230 V AC / 50 - 60 Hz	
Power	max 70 VA	
Operating temperature	5 ... 35 °C	
Relative humidity	max 80 % (non-condensing)	

# Pica II

## High reliability in second generation.



### Highlights

- > Stable metal housing for industrial applications
- > Small footprint for applications with limited space
- > Serial, parallel and USB port
- > Display for comfortable operation
- > Cover with viewing window

### Options

- > LAN and WLAN 802.11 b/g interface
- > Guillotine cutter unit
- > Dispenser unit
- > Dispenser I/O
- > External label rewinder

### Guillotine cutter unit



### Dispenser unit



### External label rewinder



	Pica II 104/8	Pica II 106/12	Pica II 103/8 T	Pica II 108/12 T
<b>Printing</b>				
Print resolution	200 dpi	300 dpi	203 dpi	300 dpi
Print speed	max 100 mm/s	max 100 mm/s	max 100 mm/s	max 100 mm/s
Print width	max 104 mm	max 105.7 mm	max 104 mm	max 108.4 mm
Passage width	max 110 mm	max 110 mm	max 110 mm	max 110 mm
Printhead	Flat Type <sup>2</sup>	Flat Type <sup>2</sup>	Flat Type <sup>1</sup>	Flat Type <sup>1</sup>
<b>Labels</b>				
Adhesive labels, continuous labels	rolls or fan-fold: paper, cardboard, textile, synthetics			
Material weight	max 220 g/m <sup>2</sup> (larger on demand)			
Label width	min 15 mm			
Label height Standard Cutter mode/dispenser mode	min 6 mm min 15 mm			
Label height Standard Ethernet (option)	max 750 mm max 650 mm	max 750 mm max 650 mm	max 650 mm max 450 mm	max 650 mm max 450 mm
Roll diameter internal unwinder internal rewinder	max 180 mm –			
Core diameter	40 mm / 75 mm (option)			
Winding	outside or inside			
Label sensor Standard Option	transmission top transmission and reflexion / bottom transmission and reflexion			
<b>Transfer Ribbons</b> (for thermal transfer printer only)				
Ink	outside / inside (option)			
Core diameter	25.4 mm / 1"			
Roll diameter	max Ø 70 mm			
Length	max 300 m			
Width	max 110 mm			
<b>Fonts</b>				
Font types	6 bitmap fonts   8 vector fonts/TrueType fonts   6 proportional fonts   more fonts on demand			
<b>Bar Codes</b>				
1D bar codes	CODABAR, Code 128, Code 2/5 interleaved, Code 39, Code 39 extended, Code 93, EAN 13, EAN 8, EAN ADD ON, GS1-128, Identcode, ITF 14, Leitcode, Pharmacode, PZN 7 Code, PZN 8 Code, UPC-A, UPC-E			
2D bar codes	Aztec Code, CODABLOCK F, DataMatrix, GS1 DataMatrix, MAXICODE, PDF 417, QR Code			
GS1 bar codes	GS1 DataBar Expanded, GS1 DataBar Limited, GS1 DataBar Omnidirectional, GS1 DataBar Stacked, GS1 DataBar Stacked Omnidirectional, GS1 DataBar Truncated			
<b>Dimensions</b>				
width x height x depth	230 x 230 x 350 mm			
<b>Weight</b>				
Weight	9 kg			
<b>Interfaces</b>				
Serial	RS-232C (max 115,200 baud)			
Parallel	Centronics (SPP)			
USB	2.0 High Speed Slave			
Ethernet (option)	10/100 Base T, LPD, RawIP-Printing, DHCP, HTTP, FTP			
WLAN (option)	module 802.11 b/g/n WEP, WPA, WPA-PSK, WPA2, WPA2-PSK, EAP			
<b>Operating Conditions</b>				
Nominal voltage	110 ... 230 V AC / 50-60 Hz – 2 A   115 V AC / 50-60 Hz – 3 A (option) voltage adjustment by an internal voltage selector pre-adjustment 230 V AC			
Power	max 150 VA			
Operating temperature	5 ... 35 °C			
Relative humidity	max 80 % (non-condensing)			

<sup>1</sup> = Flat Type for thermal direct . <sup>2</sup> = Flat Type for thermal transfer

# Vita II

More flexibility. More efficiency. More reliability.



## Highlights

- > Graphic display with white background lighting
- > Serial, parallel, LAN and USB port
- > Print resolution: 200 dpi, 300 dpi and 600 dpi
- > Insertion for Compact Flash card

## Options

- > WLAN 802.11 b/g interface
- > Guillotine cutter unit
- > Dispenser unit
- > Dispenser I/O
- > External label rewinder

## Guillotine cutter unit



## Dispenser unit



## External label rewinder





	Vita II 103/8 T	Vita II 104/8	Vita II 106/12	Vita II 106/24	Vita II 108/12 T
<b>Printing</b>					
Print resolution	203 dpi	203 dpi	300 dpi	600 dpi	300 dpi
Print speed	max 200 mm/s	max 200 mm/s	max 150 mm/s	max 100 mm/s	max 150 mm/s
Print width	max 104 mm	max 104 mm	max 105.7 mm	max 105.7 mm	max 108.4 mm
Passage width Standard Cutter mode/dispenser mode	max 116 mm max 112 mm	max 116 mm max 112 mm	max 116 mm max 112 mm	max 116 mm max 112 mm	max 116 mm max 112 mm
Printhead	Flat Type <sup>1</sup>	Flat Type <sup>2</sup>	Flat Type <sup>2</sup>	Flat Type <sup>2</sup>	Flat Type <sup>1</sup>
<b>Labels</b>					
Adhesive labels, continuous labels	rolls or fan-fold: paper, cardboard, textile, synthetics				
Material weight	max 220 g/m <sup>2</sup> (larger on demand)				
Label width	min 12 mm				
Label height Standard Cutter mode/dispenser mode	min 5 mm min 15 mm				
Label height	max 6000 mm	max 6000 mm	max 3000 mm	max 1000 mm	max 3000 mm
Roll diameter internal unwinder internal rewinder	max 180 mm -				
Core diameter	40 mm / 75 mm (option)				
Winding	outside or inside				
Label sensor	bottom transmission and reflexion				
<b>Transfer Ribbons</b>					
Ink	outside or inside				
Core diameter	25.4 mm / 1"				
Roll diameter	max Ø 80 mm				
Length	max 450 m				
Width	max 110 mm				
<b>Fonts</b>					
Font types	6 bitmap fonts   8 vector fonts/TrueType fonts   6 proportional fonts   more fonts on demand				
<b>Bar Codes</b>					
1D bar codes	CODABAR, Code 128, Code 2/5 interleaved, Code 39, Code 39 extended, Code 93, EAN 13, EAN 8, EAN ADD ON, GS1-128, Identcode, ITF 14, Leitcode, Pharmacode, PZN 7 Code, PZN 8 Code, UPC-A, UPC-E				
2D bar codes	Aztec Code, CODABLOCK F, DataMatrix, GS1 DataMatrix, MAXICODE, PDF 417, QR Code				
GS1 bar codes	GS1 DataBar Expanded, GS1 DataBar Limited, GS1 DataBar Omnidirectional, GS1 DataBar Stacked, GS1 DataBar Stacked Omnidirectional, GS1 DataBar Truncated				
<b>Dimensions</b>					
width x height x depth	236 x 238 x 374 mm				
<b>Weight</b>					
Weight	11 kg				
<b>Interfaces</b>					
Serial	RS-232C (max 115,200 baud)				
Parallel	SPP				
USB	2.0 High Speed Slave				
Ethernet	10/100 Base T, LPD, RawIP-Printing, DHCP, HTTP, FTP				
WLAN (option)	module 802.11 b/g/n WEP, WPA, WPA-PSK, WPA2, WPA2-PSK, EAP				
<b>Operating Conditions</b>					
Nominal voltage	110 ... 230 V AC / 50-60 Hz				
Power	275 VA				
Nominal current	2.5 A				
Operating temperature	5 ... 35 °C				
Relative humidity	max 80 % (non-condensing)				

<sup>1</sup> = Flat Type for thermal direct . <sup>2</sup> = Flat Type for thermal transfer

# Compa III

## High versatility in a brand new look.



### Highlights

- > Large label rolls with a diameter up to 205 mm
- > Print speed up to 300 mm/s
- > Easy to operate and maintain
- > Graphic display with white background lighting
- > Serial, LAN and USB port
- > Insertion for compact flash card
- > Stand-alone mode

### Options

- > Rotation cutter unit
- > Dispenser unit
- > Dispenser I/O
- > Internal rewriter
- > External label rewriter
- > Pneumatic applicator

### Guillotine cutter unit



### Dispenser unit



### External label rewriter



	Compa III 103/8	Compa III 104/8	Compa III 106/12	Compa III 106/24	Compa III 108/12	Compa III 162/12
<b>Printing</b>						
Print resolution	203 dpi	203 dpi	300 dpi	600 dpi	300 dpi	300 dpi
Print speed (max)	300 mm/s	300 mm/s	300 mm/s	150 mm/s	300 mm/s	250 mm/s
Print width (max)	104 mm	104 mm	105.7 mm	105.6 mm	108.4 mm	162.6 mm
Passage width (max)	120 mm	120 mm	120 mm	120 mm	120 mm	180 mm
Printing principle	TT/TD <sup>1</sup>	TT <sup>2</sup>	TT <sup>2</sup>	TT <sup>2</sup>	TT/TD <sup>1</sup>	TT/TD <sup>1</sup>
<b>Labels</b>						
Labels, continuous rolls or fan-fold	paper, cardboard, textile, synthetics					
Material weight (max)	max. 220 g/m <sup>2</sup> (larger on demand)					
Label width (min)	20 mm					46 mm
Liner width (min)	25 mm					50 mm
Label height (min) Standard Cutter/dispenser mode	5 mm 15 mm					5 mm 25 mm
Label height (max) Standard Dispenser mode	6000 mm 200 mm	6000 mm 200 mm	3000 mm 200 mm	750 mm 200 mm	3000 mm 200 mm	2000 mm 200 mm
Roll diameter (max)	205 mm					
Core diameter Standard Additional dimensions	Ø 40 mm Ø 38.1 up to Ø 76 mm (optional additional cores possible)					
Winding	outside or inside					
Label sensor	transmission and reflexion from below					
<b>Transfer ribbon</b>						
Ink	outside or inside					
Core diameter	25.4 mm / 1"					
Roll diameter (max)	Ø 90 mm					
Length (max)	600 m					
Width (max)	114 mm					170 mm
<b>Internal rewinder for printers</b>						
Outside diameter	142 mm					
Core diameter	Ø 40 mm					
Winding	outside					
<b>Fonts and bar codes</b>						
Font types	6 bitmap Fonts   8 vector fonts/TrueType fonts   6 proportional fonts   other fonts on demand					
1D bar codes	CODABAR, Code 128, Code 2/5 interleaved, Code 39, Code 39 extended, Code 93, EAN 13, EAN 8, EAN ADD ON, GS1-128, Identcode, ITF 14, Leitcode, Pharmacode, PZN 7 Code, PZN 8 Code, UPC-A, UPC-E					
2D bar codes	Aztec Code, CODABLOCK F, DataMatrix, GS1 DataMatrix, MAXICODE, PDF 417, QR Code					
GS1 bar codes	GS1 DataBar Expanded, GS1 DataBar Limited, GS1 DataBar Omnidirectional, GS1 DataBar Stacked, GS1 DataBar Stacked Omnidirectional, GS1 DataBar Truncated					
<b>Dimensions</b>						
Width x height x depth (mm)	252 x 288 x 460					312 x 288 x 460
Weight	10 kg					14 kg
<b>Interfaces</b>						
Serial	RS-232C (bis 115.200 Baud)					
USB	2.0 High Speed Slave					
Ethernet	10/100 Base T, LPD, RawIP-Printing, DHCP					
<b>Operating data</b>						
Power supply	110 ... 240 V AC / 50-60 Hz					
Max. power consumption	200 VA					
Nominal current	2.5 A					
Operating temperature	5 ... 35 °C					
Relative humidity	max. 85 % (non-condensing)					

<sup>1</sup> = Thermal transfer / thermal direct . <sup>2</sup> = Thermal transfer

# Vario III

## Bestselling printer already in its third generation.



### Highlights

- > 7" Touch-screen display  
Variant with LCD graphic display & foil keyboard<sup>1</sup>
- > Internal rewinder (max Ø 100 mm)
- > Serial, parallel, LAN and USB port
- > Unicode-compliant for multilingual applications
- > Stand-alone mode
- > Insertion for Compact Flash card

### Options

- > Bar code scanner
- > WLAN 802.11 b/g interface
- > Dispenser I/O
- > Guillotine cutter unit
- > Dispenser unit

<sup>1</sup> These are two independent printers.

### Guillotine cutter unit



### Dispenser unit



### Touch-screen display



	Vario III 103/8 T	Vario III 104/8	Vario III 107/12	Vario III 107/24	Vario III 108/12 T
<b>Printing</b>					
Print resolution	203 dpi	203 dpi	300 dpi	600 dpi	300 dpi
Print speed	max 250 mm/s	max 250 mm/s	max 250 mm/s	max 100 mm/s	max 250 mm/s
Print width	max 104 mm	max 104 mm	max 105.7 mm	max 105.7 mm	max 108.4 mm
Passage width	max 110 mm	max 110 mm	max 110 mm	max 110 mm	max 110 mm
Printhead	Flat Type <sup>1</sup>	Flat Type <sup>2</sup>	Flat Type <sup>2</sup>	Flat Type <sup>2</sup>	Flat Type <sup>1</sup>
<b>Labels</b>					
Adhesive labels, continuous labels	rolls or fan-fold: paper, cardboard, textile, synthetics				
Material weight	max 220 g/m <sup>2</sup> (larger on demand)				
Label width	min 15 mm				
Label height Standard Cutter mode/dispenser mode	min 6 mm min 15 mm				
Label height	max 6000 mm	max 6000 mm	max 3000 mm	max 1000 mm	max 3000 mm
Roll diameter internal unwinder internal rewinder	max 200 mm max 100 mm				
Core diameter	40 mm / 75 mm (option)				
Winding	outside or inside				
Label sensor Standard Option	transmission top or bottom reflexion				
<b>Transfer Ribbons</b>					
Ink	outside or inside				
Core diameter	25.4 mm / 1"				
Roll diameter	max Ø 80 mm				
Length	max 450 m				
Width	max 110 mm				
<b>Fonts</b>					
Font types	6 bitmap fonts   8 vector fonts/TrueType fonts   6 proportional fonts   more fonts on demand				
<b>Bar Codes</b>					
1D bar codes	CODABAR, Code 128, Code 2/5 interleaved, Code 39, Code 39 extended, Code 93, EAN 13, EAN 8, EAN ADD ON, GS1-128, Identcode, ITF 14, Leitcode, Pharmacode, PZN 7 Code, PZN 8 Code, UPC-A, UPC-E				
2D bar codes	Aztec Code, CODABLOCK F, DataMatrix, GS1 DataMatrix, MAXICODE, PDF 417, QR Code				
GS1 bar codes	GS1 DataBar Expanded, GS1 DataBar Limited, GS1 DataBar Omnidirectional, GS1 DataBar Stacked, GS1 DataBar Stacked Omnidirectional, GS1 DataBar Truncated				
<b>Dimensions</b>					
width x height x depth	230 x 310 x 450 mm				
<b>Weight</b>					
Weight	16 kg				
<b>Interfaces</b>					
Serial	RS-232C (max 115,200 baud)				
Parallel	SPP				
USB	2.0 High Speed Slave				
Ethernet	10/100 Base T, LPD, RawIP-Printing, DHCP, HTTP, FTP				
WLAN (option)	module 802.11 b/g/n WEP, WPA, WPA-PSK, WPA2, WPA2-PSK, EAP				
<b>Operating Conditions</b>					
Nominal voltage	110 ... 230 V AC / 50 - 60 Hz				
Power	max 150 VA				
Operating temperature	5 ... 35 °C				
Relative humidity	max 80 % (non-condensing)				

<sup>1</sup> = Flat Type for thermal direct . <sup>2</sup> = Flat Type for thermal transfer

# Spectra II

## Highspeed performance in second generation.



### Highlights

- > 6.5" Touch-screen display  
Variant with LCD graphic display & foil keyboard<sup>1</sup>
- > Print speed up to 350 mm/s
- > Compact cover
- > Transfer ribbon saving

### Options

- > Rotation cutter unit
- > Dispenser unit
- > Roll-to-Roll
- > Internal rewinder
- > External rewinder

<sup>1</sup> These are two independent printers.

### Rotation cutter unit



### Dispenser unit












### Internal rewinder



	Spectra II 103/8 (104/8)	Spectra II 106/12	Spectra II 106/24	Spectra II 107/12	Spectra II 108/12	Spectra II 160/12	Spectra II 162/12	Spectra II 216/12
<b>Printing</b>								
Print resolution	200 dpi	300 dpi	600 dpi	300 dpi	300 dpi	300 dpi	300 dpi	300 dpi
Print speed	350 mm/s	350 mm/s	100 mm/s	350 mm/s	350 mm/s	300 mm/s	300 mm/s	200 mm/s
Print width	104 mm	105.7 mm	105.6 mm	106.6 mm	108.4 mm	160 mm	162.6 mm	216.8 mm
Passage width	116 mm	116 mm	116 mm	116 mm	116 mm	176 mm	176 mm	226 mm
Printhead	Flat Type <sup>1+2</sup>	Flat Type <sup>2</sup>	Flat Type <sup>2</sup>	Corner Type <sup>2</sup>	Flat Type <sup>1+2</sup>	Corner Type <sup>2</sup>	Flat Type <sup>1+2</sup>	Flat Type <sup>1+2</sup>
<b>Labels</b>								
Adhesive labels, continuous labels	rolls or fan-fold: paper, cardboard, textile, synthetics							
Material weight	max. 220 g/m <sup>2</sup> (larger on demand)							
Label width	min 15 mm	min 15 mm	min 15 mm	min 15 mm	min 15 mm	min 50 mm	min 50 mm	min 100 mm
Label height Standard Cutter mode/dispenser mode	min 6 mm min 25 mm	min 6 mm min 25 mm	min 15 mm min 25 mm	min 6 mm min 25 mm	min 6 mm min 25 mm	min 15 mm min 25 mm	min 15 mm min 25 mm	min 15 mm min 25 mm
Label height	max 6000 mm	max 3000 mm	max 750 mm	max 3000 mm	max 3000 mm	max 2000 mm	max 2000 mm	max 1000 mm
Roll diameter Internal unwinder Internal rewinder	max 200 mm max 200 mm (option)							
Core diameter	40 mm / 75 mm (option)							
Winding	outside or inside							
Label sensor Standard Option	bottom transmission and reflexion top transmission and reflexion, ultrasonic photocell							
<b>Transfer Ribbon</b>								
Ink	outside or inside							
Core diameter	25.4 mm / 1"							
Roll diameter	max Ø 90 mm							
Length	max 450 m							
Width	max 110 mm	max 110 mm	max 110 mm	max 110 mm	max 110 mm	max 163 mm	max 170 mm	max 220 mm
<b>Fonts</b>								
Font types	6 bitmap fonts   8 vector fonts/TrueType fonts   6 proportional fonts   other fonts on demand							
<b>Bar Codes</b>								
1D bar codes	CODABAR, Code 128, Code 2/5 interleaved, Code 39, Code 39 extended, Code 93, EAN 13, EAN 8, EAN ADD ON, GS1-128, Ident-code, ITF 14, Leitcode, Pharmacode, PZN Code, UPC-A, UPC-E							
2D bar codes	Aztec Code, CODABLOCK F, DataMatrix, GS1 DataMatrix, MAXICODE, PDF 417, QR Code							
Composite bar codes	GS1 DataBar Expanded, GS1 DataBar Limited, GS1 DataBar Omnidirectional, GS1 DataBar Stacked, GS1 DataBar Stacked Omnidirectional, GS1 DataBar Truncated							
<b>Dimensions</b>								
width x height x depth	287x380 x503 mm	287x380 x503 mm	287x380 x503 mm	287x380 x503 mm	287x380 x503 mm	337x380 x503 mm	337x380 x503 mm	387x380 x503 mm
<b>Weight</b>								
Weight	19 kg	19 kg	19 kg	19 kg	19 kg	21 kg	21 kg	28 kg
<b>Interfaces</b>								
Serial	RS-232C (max 115,200 baud)							
Parallel	SPP							
USB	2.0 High Speed Slave							
Ethernet	10/100 Base T, LPD, RawIP-Printing, DHCP, HTTP, FTP							
WLAN (option)	module 802.11 b/g/n WEP, WPA, WPA-PSK, WPA2, WPA2-PSK, EAP							
<b>Operating Conditions</b>								
Nominal voltage	110 ... 230 V AC / 50-60 Hz							
Power	300 VA							
Nominal current	2.7 A							
Operating temperature	5 ... 35 °C							
Relative humidity	max 80 % (non-condensing)							

<sup>1</sup> = for thermal direct . <sup>2</sup> = for thermal transfer

- Label applicator 
- Ribbon save 
- Bar code scanner 
- Thermal printhead 
- Touch panel 
- WLAN 
- Config Tool 
- Labelstar Office 
- NiceLabel 

Local retailer

**Branches:**

**Sales office Bavaria**

Marienplatz 8a . 83043 Bad Aibling  
 Phone +49 8061 3498888 . Fax +49 8061 3499127 . [rstreck@carl-valentin.de](mailto:rstreck@carl-valentin.de)

**Sales office Spain**

Calle historiador Vedia 14 5ªB . 15004 La Coruña  
 Phone +34 881 103163 . Mobile +34 609022241 . [mllano@carl-valentin.es](mailto:mllano@carl-valentin.es)

**Sales office Switzerland**

Swiss Business Haus . Moosäckerstraße 75 . 8105 Regensdorf  
 Phone +41 61 9739641 . Mobile +41 79 7448436 . [info@carl-valentin.ch](mailto:info@carl-valentin.ch)



Carl Valentin GmbH  
 Neckarstraße 78–86 u. 94  
 78056 Villingen-Schwenningen  
 Phone +49 7720 9712-0 . Fax +49 7720 9712-9901  
[info@carl-valentin.de](mailto:info@carl-valentin.de) . [www.carl-valentin.de](http://www.carl-valentin.de)

